

CATERPILLAR CONVEYOR



STRUCTURE

structure



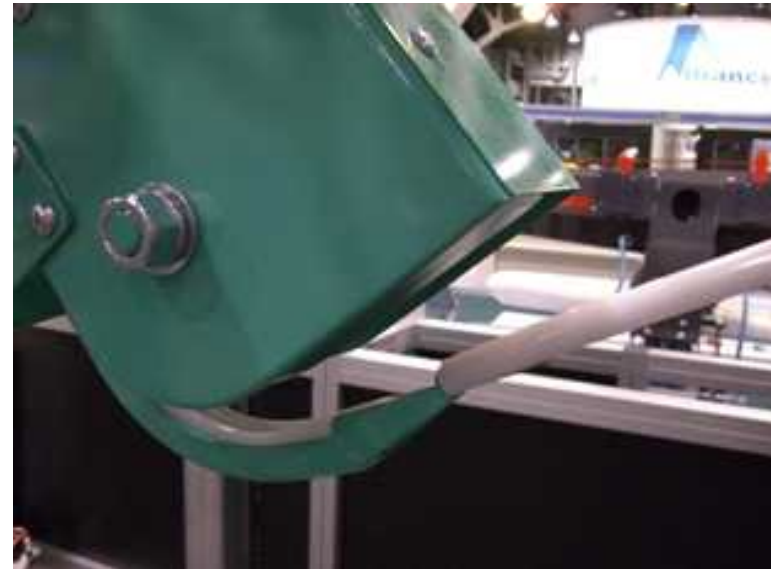
this unit is suitable for transporting garments up or down.
depending upon the user's needs.
There are two types of caterpillar conveyors: one for standard cleaning(25°)
and one for uniforms(45°).

CONNECTING

connecting



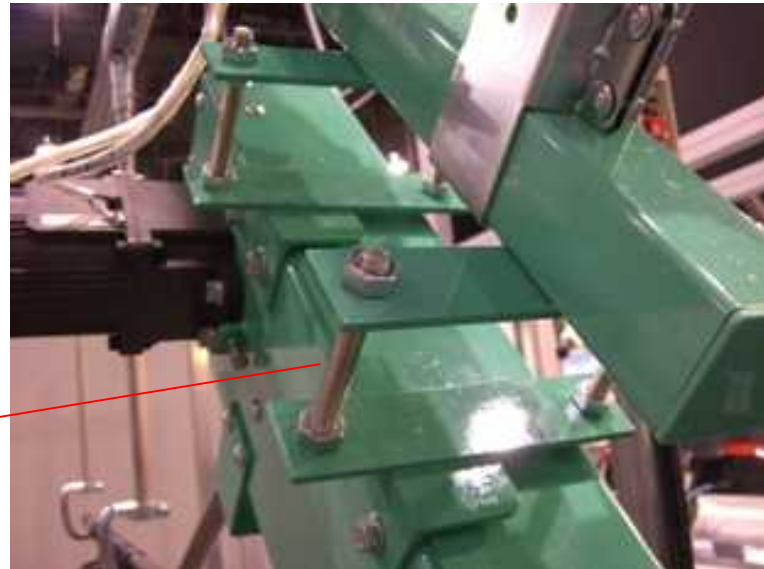
Connecting to the Slick Rail



Connecting to the Bagging Machine

ANGLE ADJUSTMENT

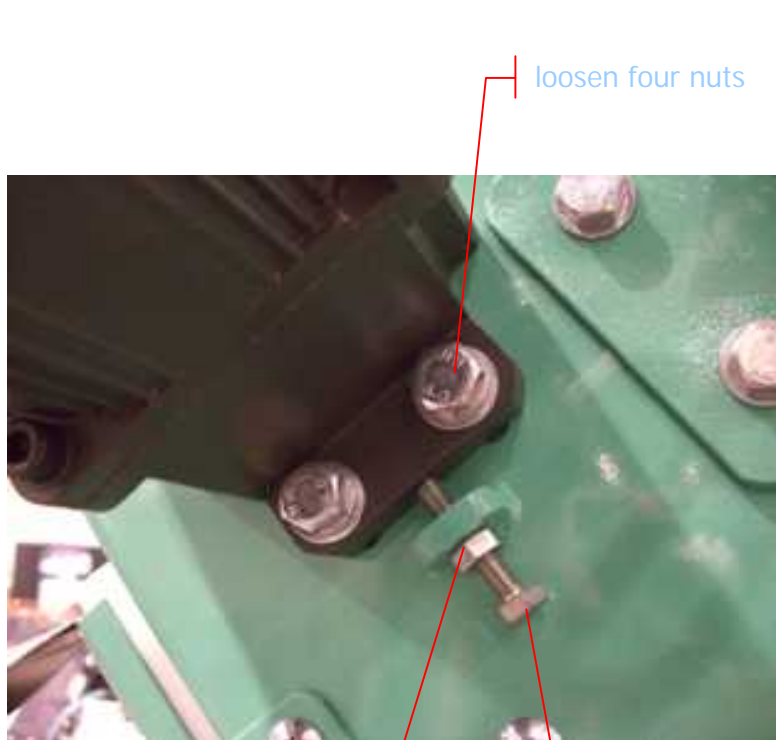
angle adjustment



The angle is easily
adjusted with four bolts.

ADJUSTMENT

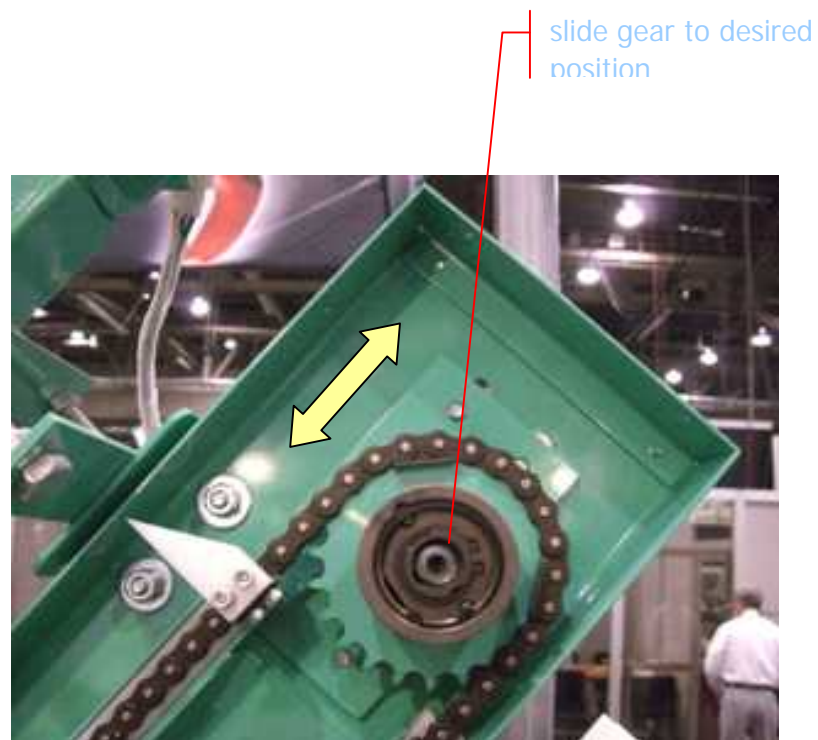
adjustment



loosen four nuts

loosen nut

tichten bolt to stretch chain



slide gear to desired position

SYSTYEM PARTS

system parts



SYSTEM PARTS

system parts



Lengthening the chain

SAMPLE LAYOUT

sample layout

